



Product series Ecofit





Standard features

4-section steel slats platform base 90 x 200 cm with mattress retainer at head and leg rest

max. patient weight 185 kg, safe working load 220 kg

electrically operated back rest up to 70° and leg rest up to 30°

mechanical height adjustment of foot rest in 3 positions

patient lifting pole that can support up to 80 kg

35 volt power supply for extra safety

9V battery for emergency

handset with single fault safety and locking function

protection class IPX4

mattress height up to 20 cm

As an option

20 cm bed extension

handset with Trendelenburg / Anti-Trendelenburg function

side rail options: continuous steel side rail, split aluminium side rail

wooden cover for more homely look (Ecofit S Plus)

auto regression of back rest

	HMV-No.	care-HMV-No.	articel-No.
Ecofit S	19.40.01.3268	50.45.01.1306	90100
Ecofit S 100	19.40.01.3040	50.45.01.1079	90110
Ecofit Plus	19.40.01.3269	50.45.01.1307	90900
Ecofit S Low 90	19.40.01.5003	50.45.01.5001	90200
Ecofit S Low 100	19.40.01.5006	50.45.01.5006	90210

Ecofit S / Ecofit S Plus / Ecofit Plus



Ecofit S



Ecofit S Plus



Ecofit Plus



Safe workload
up to 220 kg



Trendelenburg
optional



Height adjustment



Low-voltage for
increased safety



Widths: 90 cm,
100 cm & 120 cm

Ecofit S / Ecofit S Low



Ecofit S



Ecofit S Low

Height adjustment

385 - 810 mm

Height adjustment

220 - 640 mm

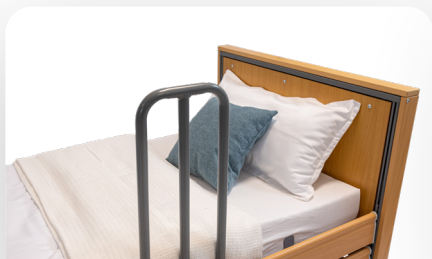
Castors

4 x 100 mm

Castors

4 x 75 mm

Accessories



grab handle



clip-on tray



side rail elevation



aluminium side rail, split



reading lamp



wall protection system



side rail protection



under-bed light

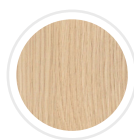


transport trolley

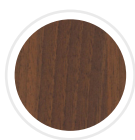
Available decors



Altmuehl Beech



Lindberg Oak



Choco Bella Noce



More

Delivery status



with carton box



without carton box

Sales

tecfor care GmbH
Fraunhoferstraße 8, 51647 Gummersbach

+49 (0) 2261 / 501 86 - 0
+49 (0) 2261 / 501 86 - 20
info@tecfor-care.com
www.tecfor-care.com

